



NHS & Local Government

Quality and Efficiency Scorecard for Frail Elderly

Wirral Locality Scorecard

December 2011

AQUA
Advancing Quality Alliance

directors of
adass
adult social services

Contents

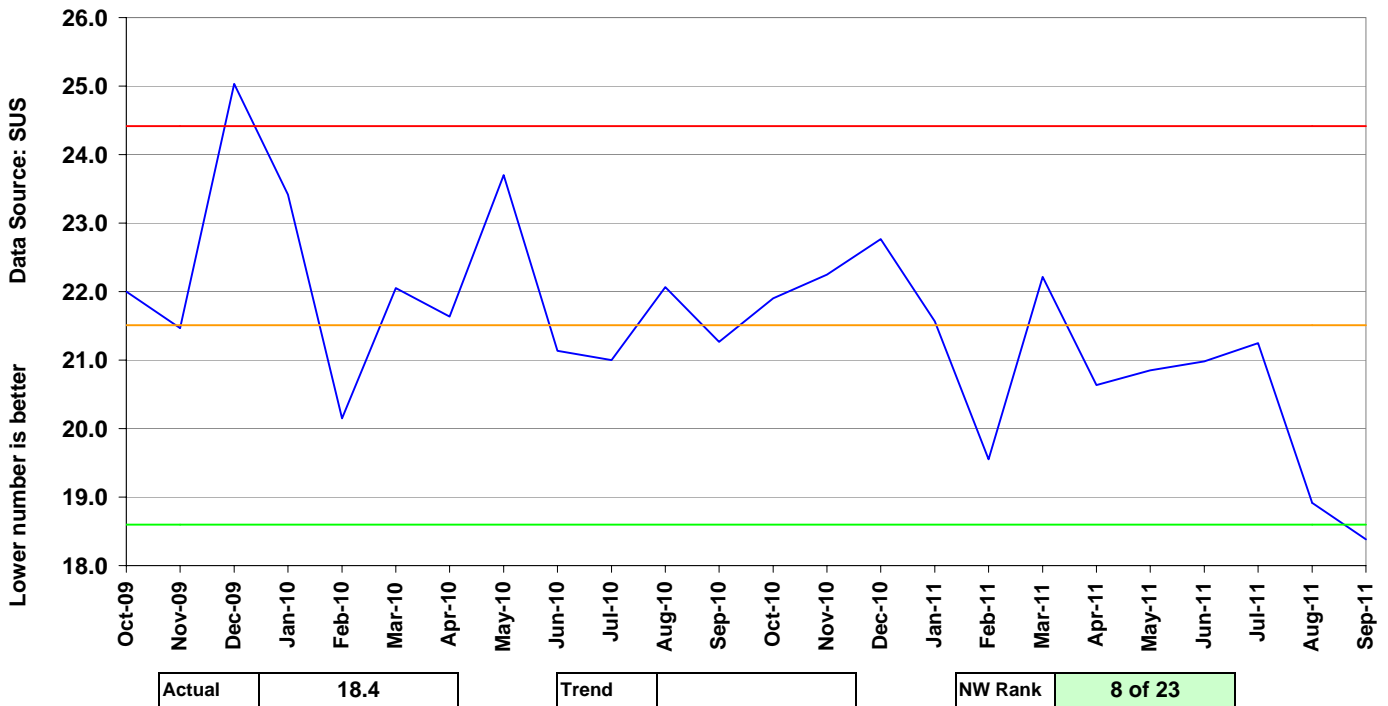
- Page 1** Wirral trend analysis graphs for measures (a) and (b)
- Page 2** Wirral trend analysis graphs for measures (c) and (d)
- Page 3** Wirral trend analysis graphs for measures (e) and (f)
- Page 4** Wirral trend analysis graphs for measures (g) and (i)
- Page 5** The story behind the data - Local Intelligence
- Page 6** Top 3 partnership interventions for Wirral
- Page 7** Metadata for measures in the locality scorecard

PLEASE SEE DATA CAVEATS ON PG 7

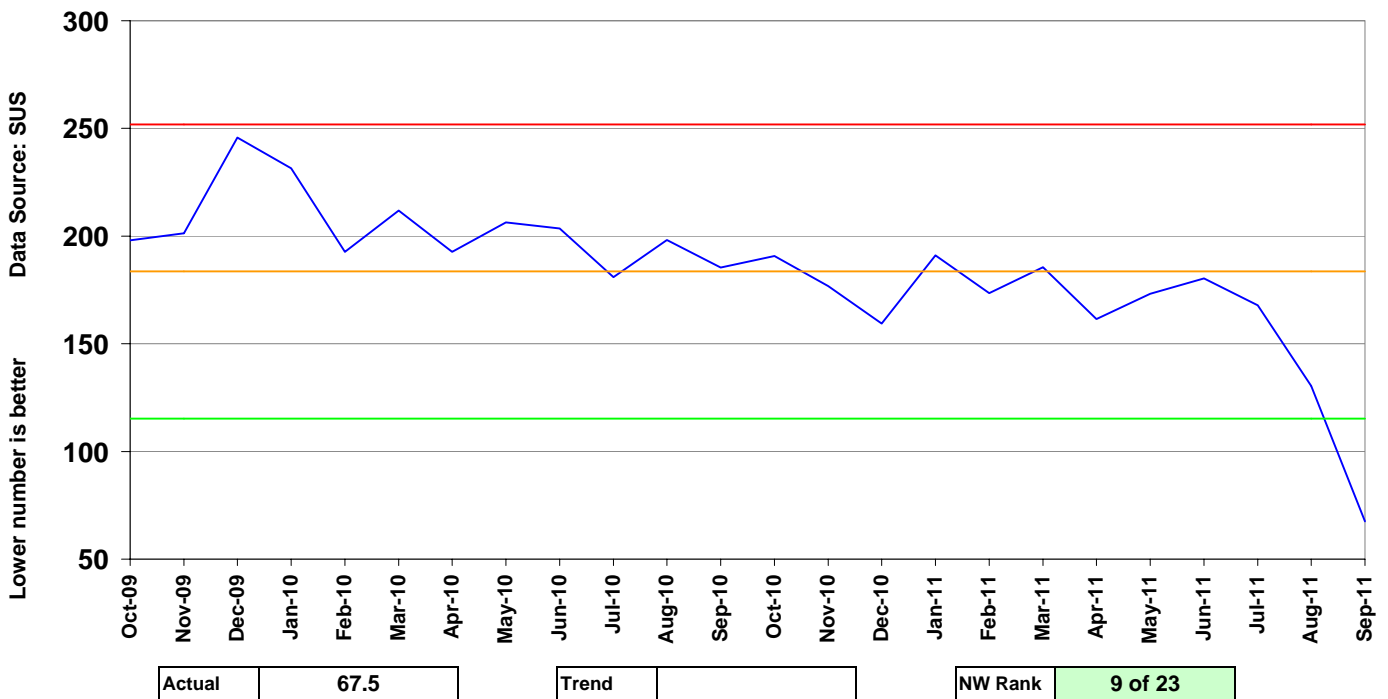
ADASS / AQUA Whole system quality and efficiency Locality Scorecard Trend Analysis graphs for Wirral

Graphs (a) and (b)

(a) Non-elective admissions aged 65+ per 1000 pop 65+



(b) Non-elective bed days aged 65+ per head of 1000 pop 65+

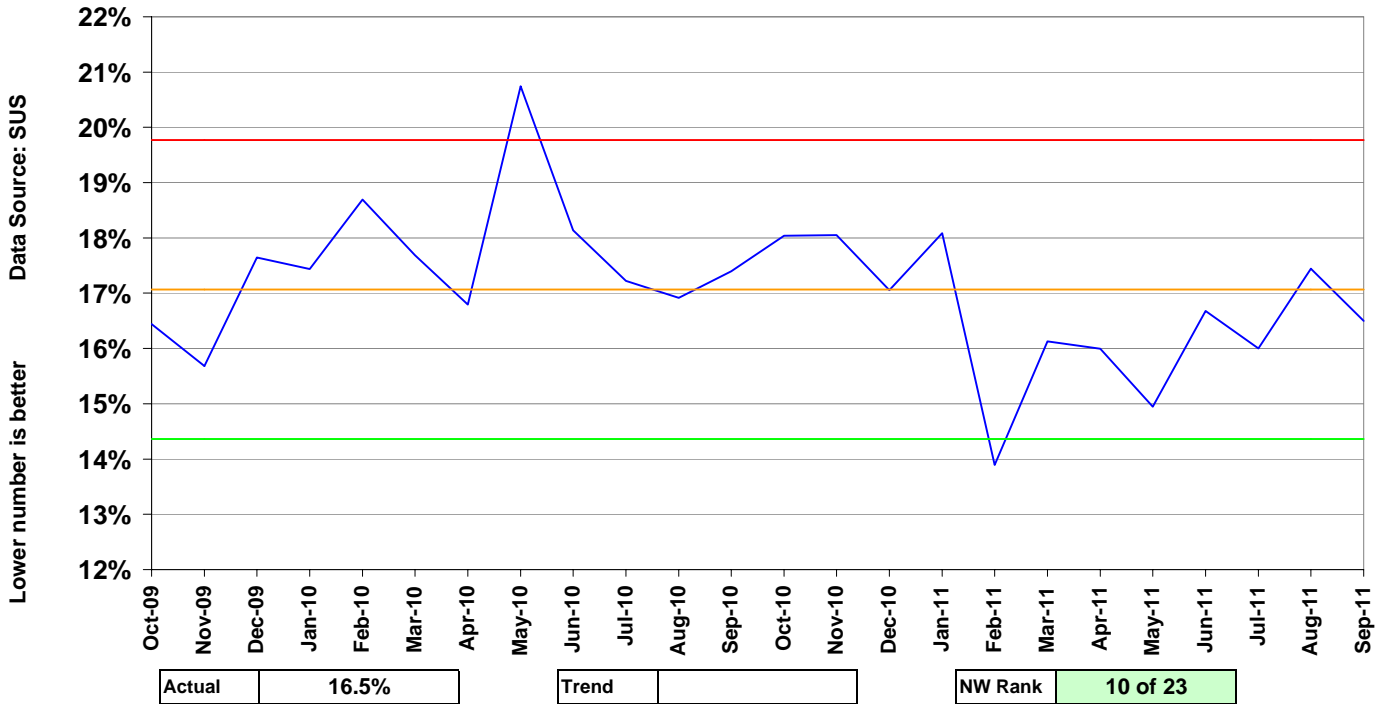


Key

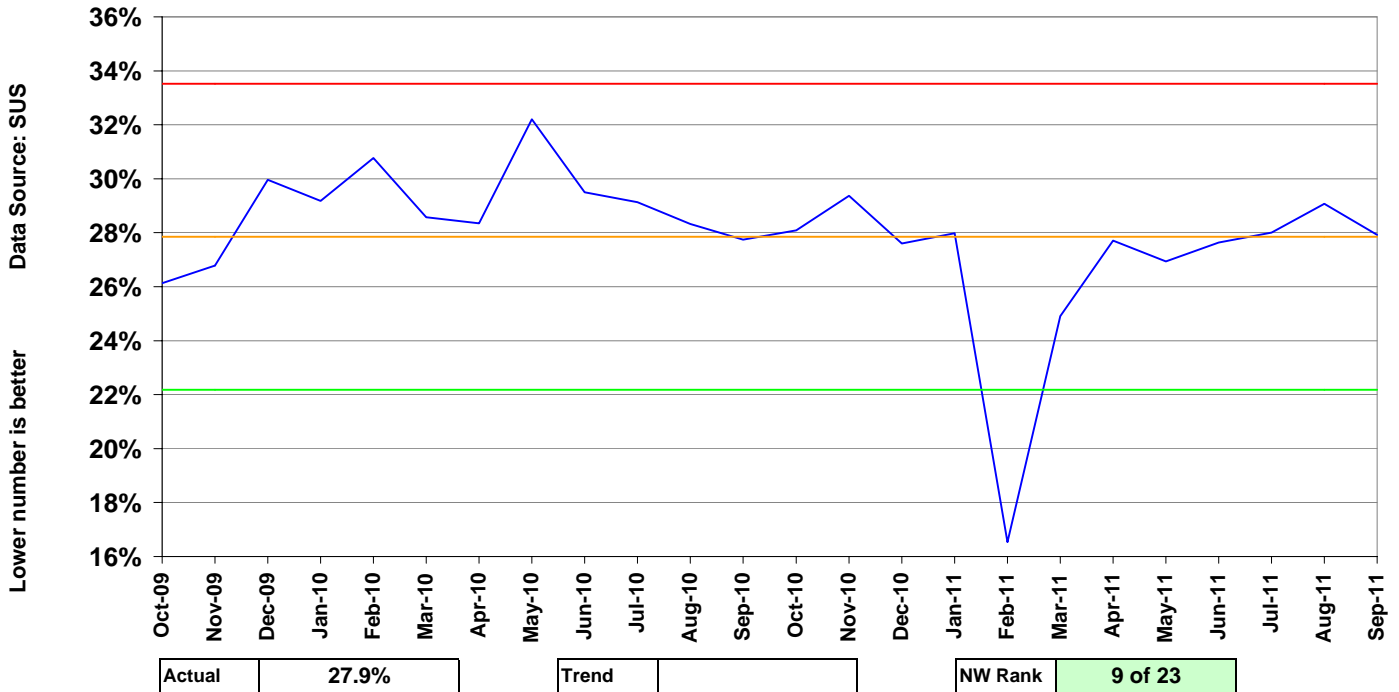


Graphs (c) and (d)

(c) Non-elective re-admission rate within 28 days aged 65 and over



(d) Non-elective re-admission rate within 90 days aged 65 and over

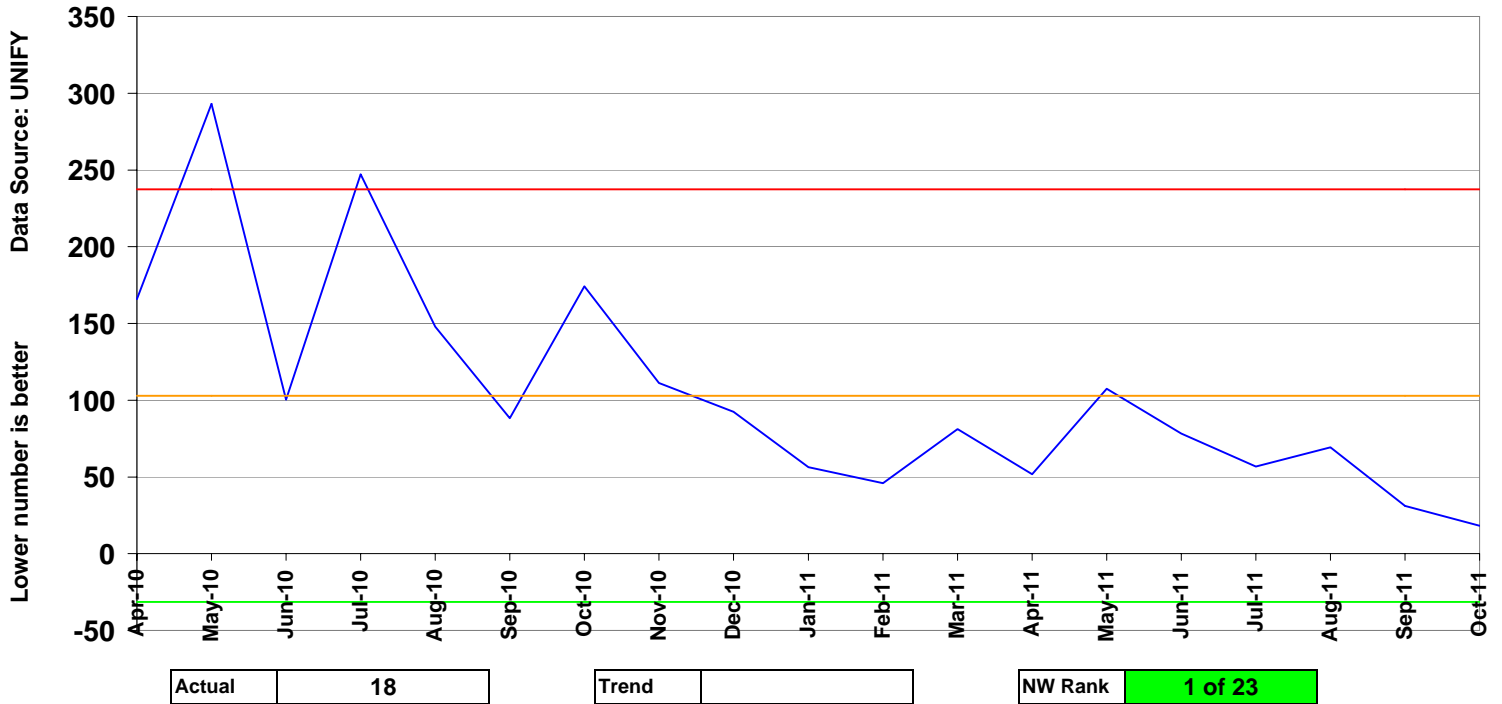


Key

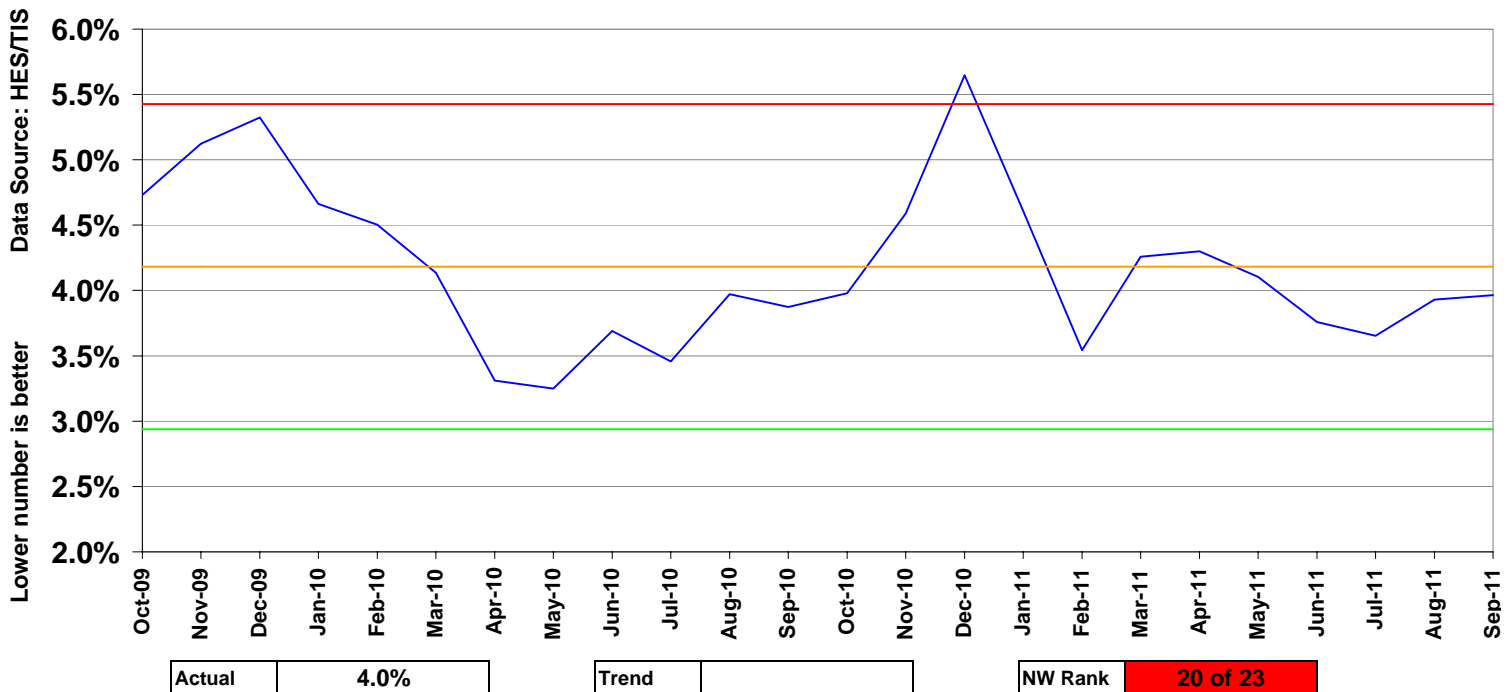


Graphs (e) and (f)

(e) No of delayed transfers of care aged 18+ per 100,000 pop



(f) Proportion of people aged 65+ discharge direct to residential care



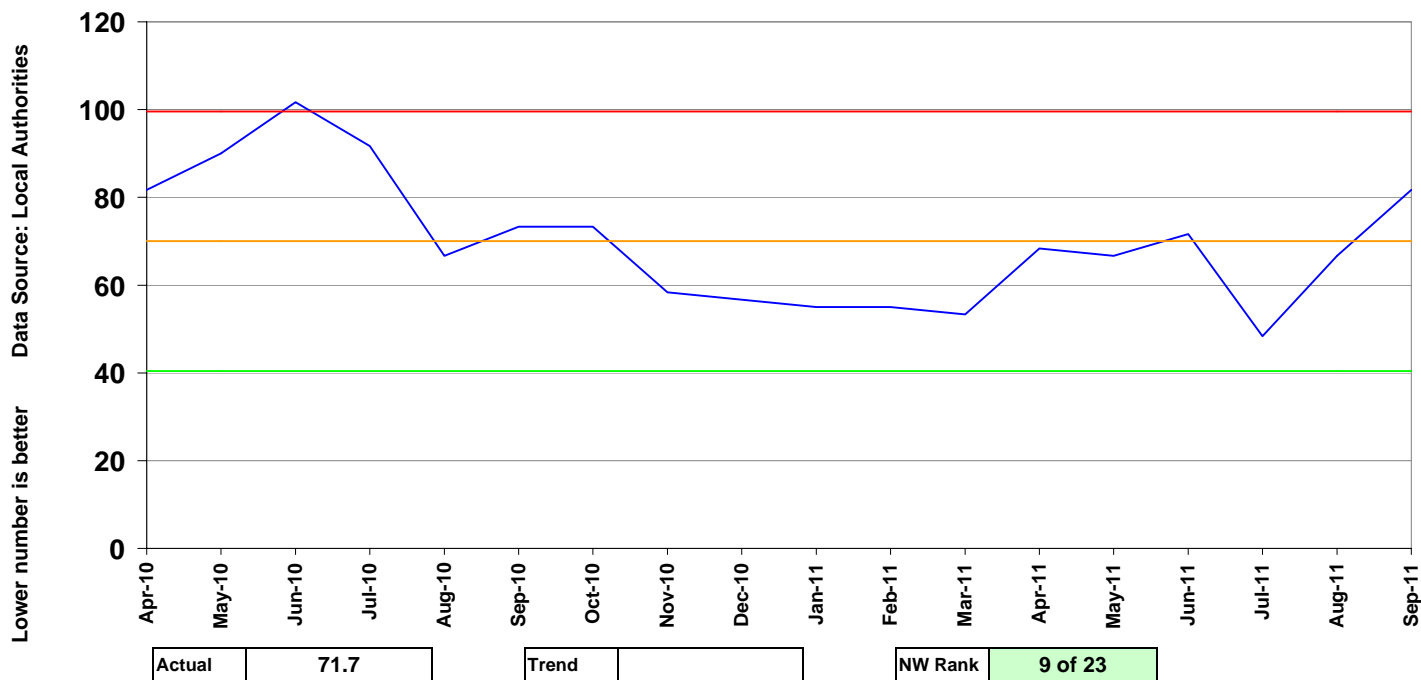
Key

Upper Control (2 st dev above average)	—
Average	—
Lower Control (2 st dev below average)	—

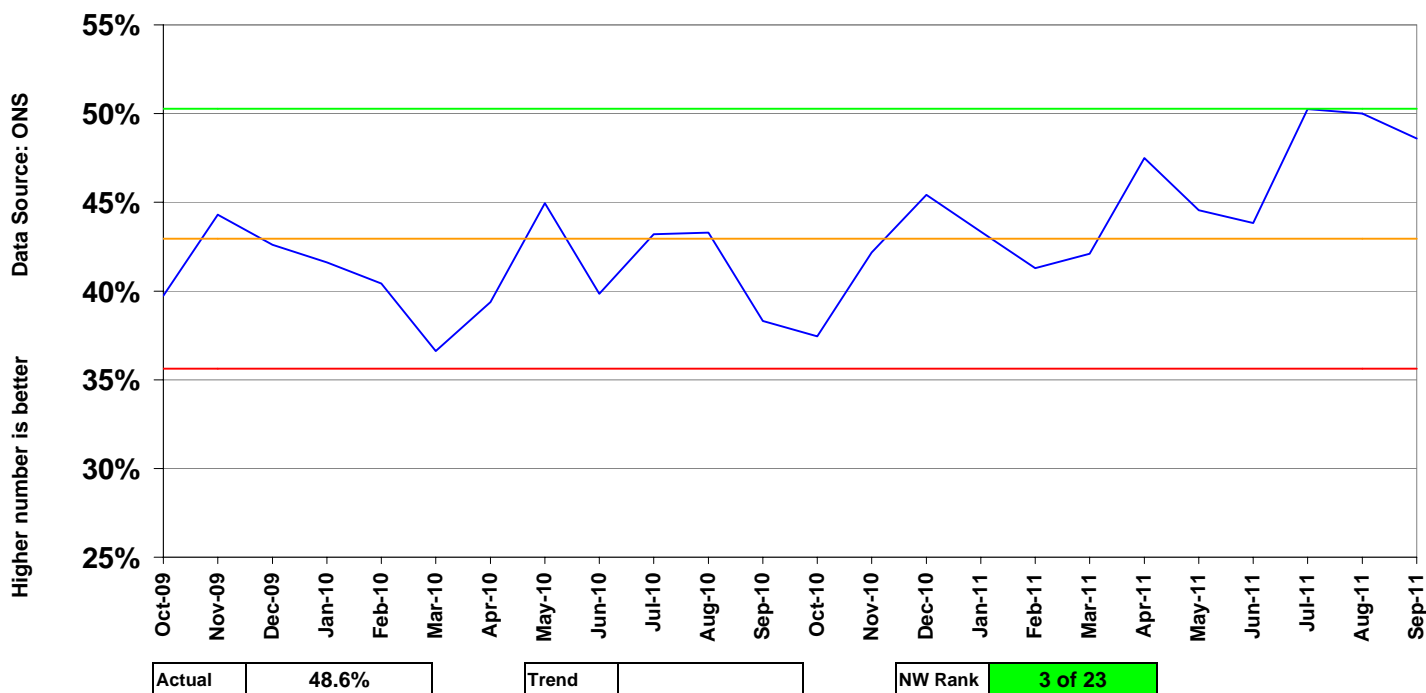
ADASS / AQUA Whole system quality and efficiency Locality Scorecard Trend Analysis graphs for Wirral

Graphs (g) and (i)

(g) Permanent admissions to residential / nursing care aged 65+ per 100,000 pop 65+



(i) Proportion of all deaths which occur at home - aged 65 and over



Key

Upper Control (2 st dev above average)	—
Average	—
Lower Control (2 st dev below average)	—

This comments box will give the story behind the data, the intelligence.

ADASS / AQUA Whole system quality and efficiency - Top 3 partnership interventions for Wirral

Intervention 1

Integrated discharge team

Intervention 2

Development of reablement service

Intervention 3

Integrated Health & Social care working in the community including the rapid access service

METADATA for the measures in the ADASS / AQUA whole system quality and efficiency locality scorecard

Measure name	Data Source	Geography/Location	Data parameters/specification for source data	Data equation/calculation	Date range	Data Caveats
(a) Non-elective admissions aged 65+ per 1000 pop 65+	From CBS via AQUA*. The data is extracted from the SUS Health system	By local authority boundary based on the address of the patient	1. Number of non-elective admissions to any hospital of patients aged 65 and over living within the local authority area.	(1. non-elective admissions aged 65 and over / population 65 and over) *1000	Oct 10 - Sep 11	All of the data for measures (a)-(d) is extracted from the SUS data system and so the last two months data are potentially subject to significant change. The last month of this data will have two more refreshes from local systems onto SUS and the data from the second to last month will have a final refresh. This will effect the data in this scorecard for these measures meaning admissions, bed days and repeats may appear lower or higher than they will actually be. THE DATA IN THIS SCORECARD FOR MEASURES (c) AND (d) WILL BE DIFFERENT TO THE APRIL-11 DRAFT VERSION DUE TO A CHANGE OF METHODOLOGY FOR CALCULATING REPEATS
(b) Non-elective bed days aged 65+ per head of 1000 pop 65+	From CBS via AQUA*. The data is extracted from the SUS Health system	By local authority boundary based on the address of the patient	2. Number of non-elective bed days in any hospital of patients aged 65 and over living within the local authority area.	(2. emergency bed days aged 65 and over / population 65 and over) *1000	Oct 10 - Sep 11	
(c) Non-elective re-admission rate within 28 days aged 65 and over	From CBS via AQUA*. The data is extracted from the SUS Health system	By local authority boundary based on the address of the patient	3. Number of non-elective readmission episodes within 28 days in any hospital of patients aged 65 and over living within the local authority area.	3. non-elective admissions in 28 days aged 65 and over / 1. non-elective readmissions	Oct 10 - Sep 11	
(d) Non-elective Re-admission rate within 90 days aged 65 and over	From CBS via AQUA*. The data is extracted from the SUS Health system	By local authority boundary based on the address of the patient	4. Number of non-elective readmission episodes within 90 days in any hospital of patients aged 65 and over living within the local authority area.	4. non-elective admissions in 90 days aged 65 and over / 1. non-elective readmissions	Oct 10 - Sep 11	
(e) No of delayed transfers of care aged 18+ per 100,000 pop	Monthly DTOC collections from provider trusts from the Unify System	By local authority boundary based on the address of the patient	5. DTOC bed days for month including acute and non acute, and DTOC for any reason and any organisation being responsible. This data is for people aged 18 and over only.	5. all delayed transfer of care bed days for February 2011 aged 18 and over / 18 and over / population 18] and over) *100,000	Oct -11 bed days	This data can be accessed at the DH at the following website: http://www.dh.gov.uk/en/Publicationsandstatistics/Statistics/Perfomancedataandstatistics/AcuteandNon-AcuteDelayedTransfersofCare/index.htm
(f) Proportion of people aged 65+ discharge direct to residential care	HES (Hospital Episode Statistics) and/or SUS data from the TIS (Tactical Information Service) via NHS North West	By local authority boundary based on the address of the patient	6. Number of people with aged 65 and over with a discharge code of 54. NHS run care home, 65. Local Authority residential accommodation i.e. where care is provided, 85. Non-NHS (other than Local Authority) run care home	6. total for codes 54, 65 and 85 / total of all discharges	Oct 10 - Sep 11	The data for the last twelve months can be subject to change throughout the year so it may appear differently to previous refreshes of the scorecard. This data could include self funders of residential care. Some patients/service users may have lived in a different authority to the one in which they enter residential care.
(g) Permanent admissions to residential/nursing care aged 65+ per 100,000 pop 65+	Collected from individual local authorities	By local authority boundary based on the address of the patient	7. Number of LA supported PERMANENT admissions aged 65 and over to residential care, nursing care and adult placements during 1 April to 31 March (excluding admissions to group homes),	7. (Admissions to res care aged 65 and over / population 65 and over) *100,000	Oct 10 - Sep 11	This data is collected directly from local authorities and has not all been verified by the Information Centre NHS so is subject to change
(i) Proportion of all deaths which occur at home / in care homes - aged 65 and over	Office of National Statistics (ONS) via NHS North West	By local authority boundary based on the address of the patient	10. Proportion of deaths occurring at home aged 65 and over. 11 all deaths aged 65 and over	10. Proportion of deaths occurring at home or in care homes aged 65 and over / 11. all deaths aged 65 and over	Sep 10 - Aug 11	

* CBS = Commissioning Business Service